

Using Foot Scanner to Scan Casts

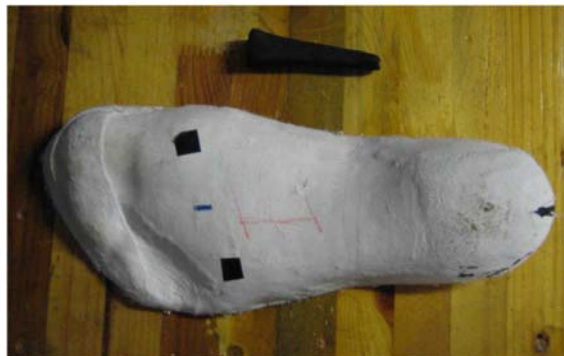
Sharp Shape, Copyright ©, All rights reserved, October 2011

Using the Sharp Shape foot scanner to scan plaster casts is a temporary relieve if the cast scanner is not available. The difference between the cast scanner and the foot scanner when scanning plaster cast is the difference between the inside and outside of the cast. If done properly, the difference can be minimized to an acceptable scale. Some customers have done that before.

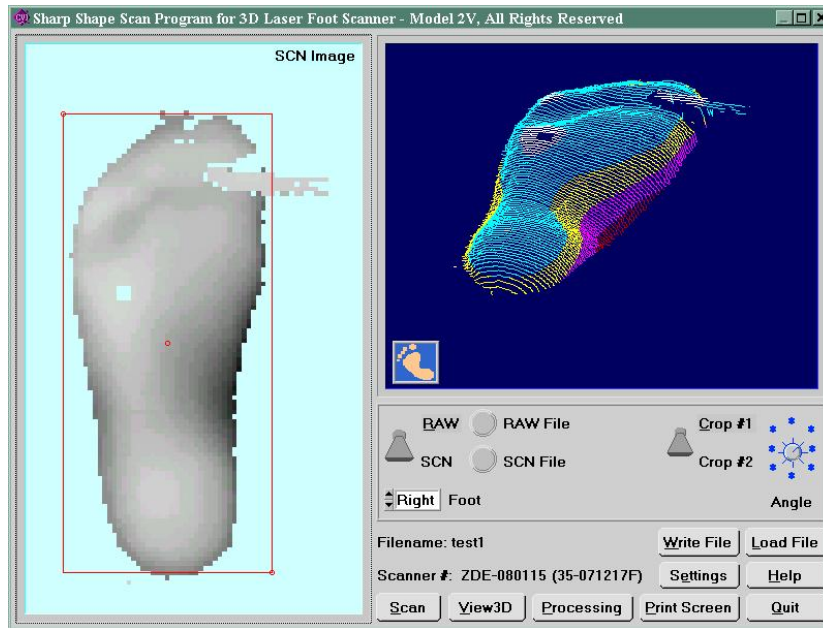
To scan the plaster cast with the foot scanner, lay the foot scanner horizontally as shown below.



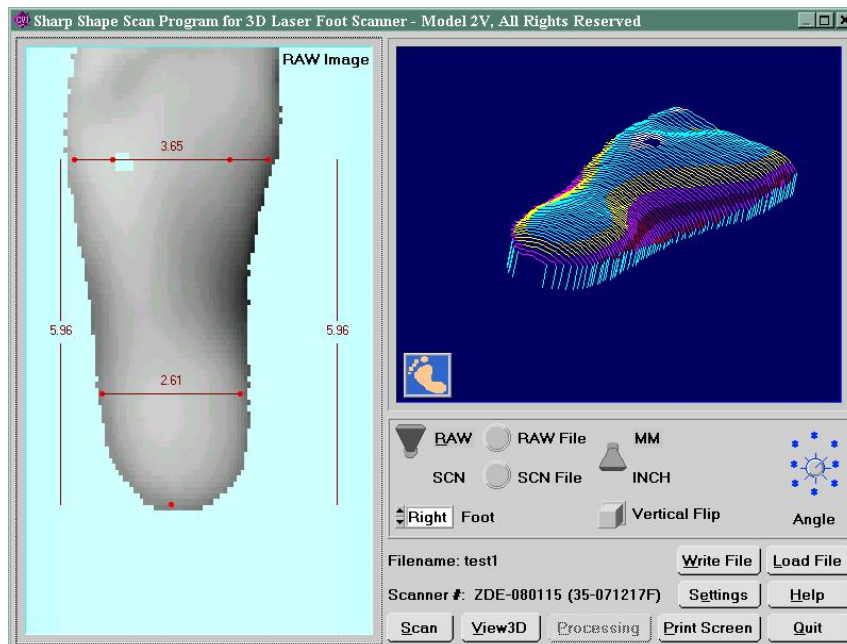
The bottom of the cast can be treated with black dots on 1st and 5th met. heads and the foot can be balanced on the scanner with a wedge as shown below.



After scan, the image is shown in the following. The rest are the same as scanning a foot.



The image can be processed as shown in the following.



For this purpose, the best plaster casts are the ones with smooth outside and thin shell. When you do the cast correction in the AOMS, make wall-thickness adjustment accordingly.

If you want to scan foam boxes, you have to pour positive casts from the boxes and then scan the positives.

If you have any questions or comments, please write to us at sharpshape@comcast.net.

-- End of File --