

Instructions on how to process the image – real case study

Sharp Shape, Copyright©, All rights reserved, April 2013

The following is a good image if you know how to process it. Some customers don't know how. It is normal to see holding hand and noise around the foot as below.

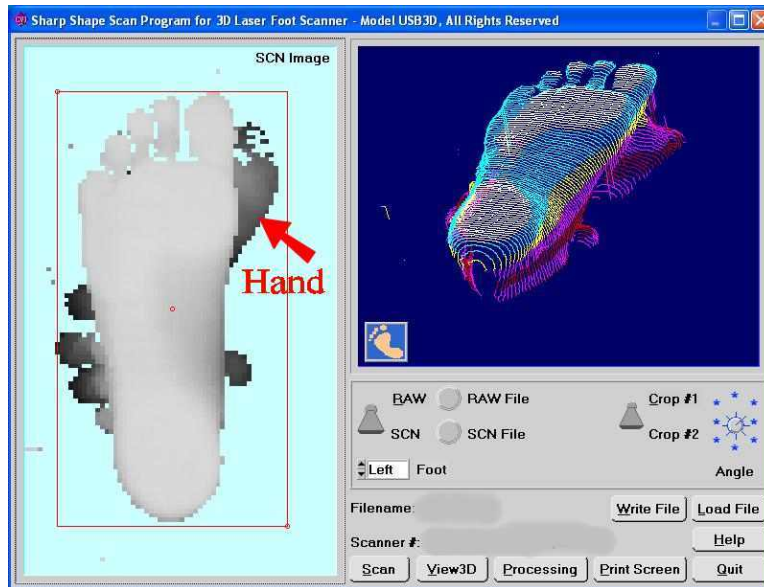


Figure 1. Original Scan

Click the switch illustrated by the red arrow below, and then drag the dots to crop the image. The foot should be inside the polygon and noise (holding hand) should be outside.

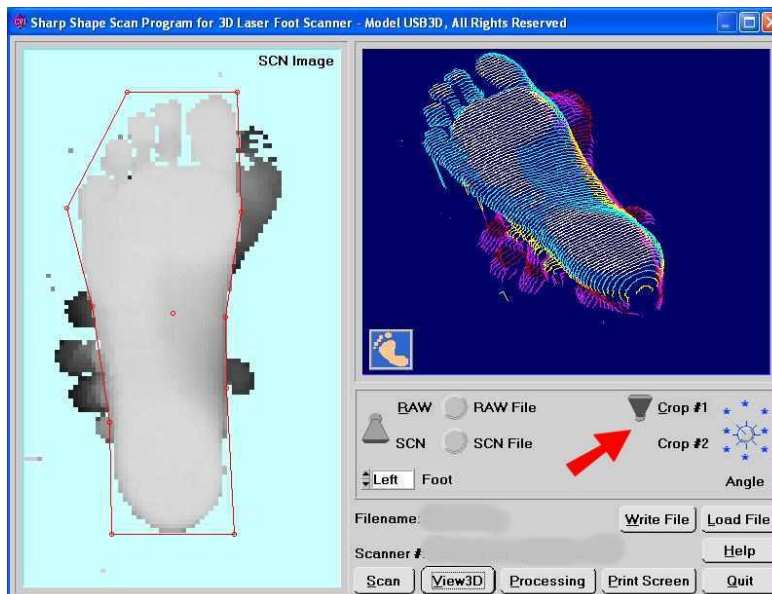


Figure 2. Use Crop #1 to crop the image

After clicking the RAW/SCN switch, locate the landmark points as below.

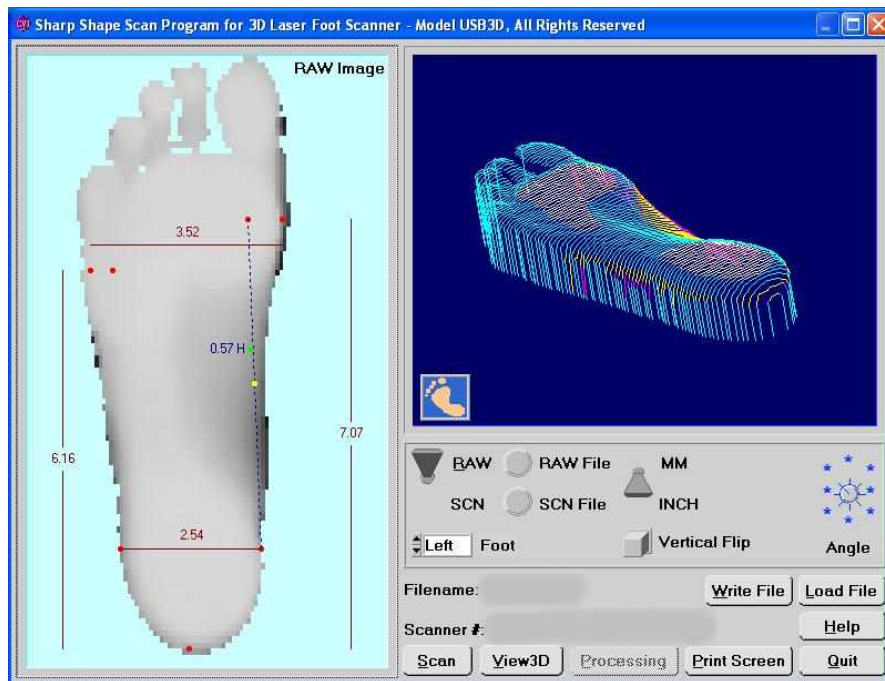


Figure 3. RAW image after cropping

If the image is tilted left and right, you can change the orientation as the following. Adjusting the angle will help the cast correction.

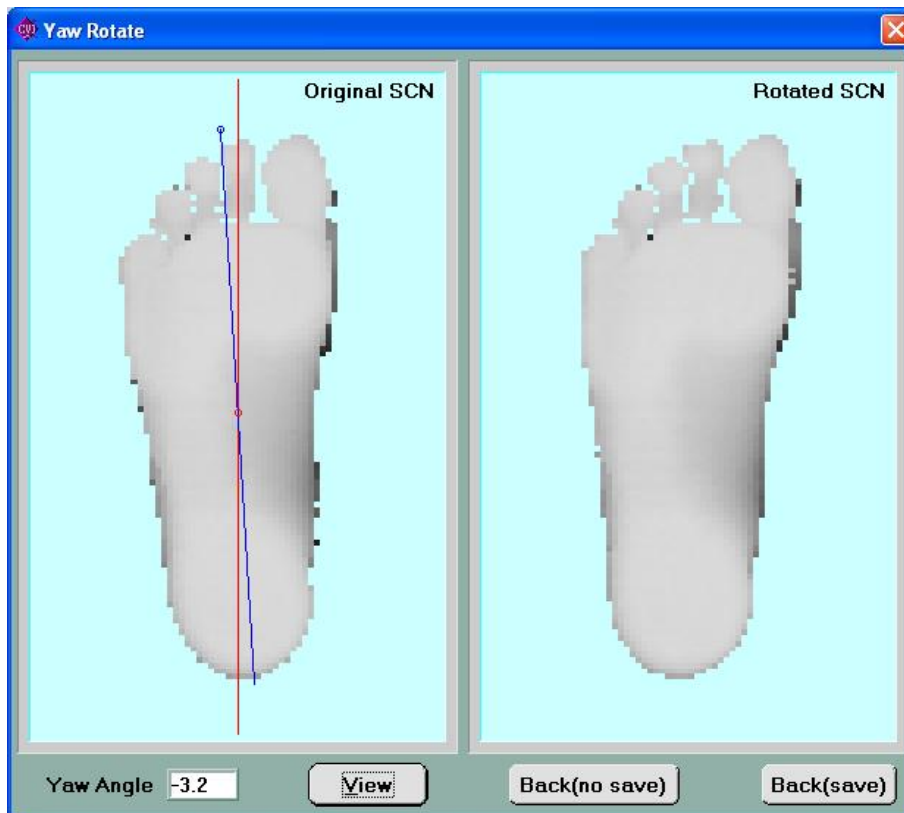


Figure 4. Click Processing and then click Yaw

If you have any questions, please contact us at sharpshape@comcast.net. *End of file*