

## An Alternative Lower Stand for Sharp Shape Foot Scanner

Sharp Shape, All rights reserves, November 14, 2012

If customers need lower stand, an alternative design is shown in this article. The assembled lower stand is shown on the left in the following photos. The possible use of the lower stand is shown on the right in the following photos.



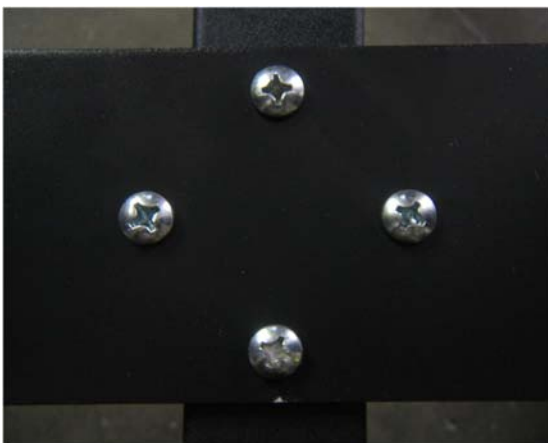
Assembled stand



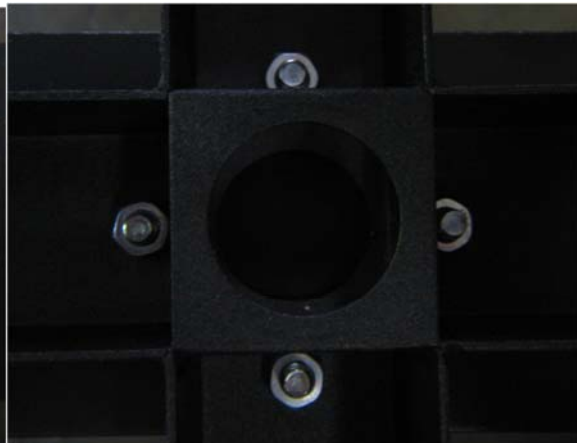
A possible use

The lower stand can be modified from our standard stand. Customers need to drill four through hole on the cross to accommodate the four mounting screws for the U-frame. The configuration is shown on the left.

To assemble the lower stand, you can use the nuts and bolts (enclosed in the standard shipment) to mount the U-frame on the cross as shown in the follow photos.



Topside screws



Bottom side screws