

## 32-Bit and 64-Bit Window 7 Driver Installation Amendment

Copyright ©, All rights reserved, June 2011

Because of the different versions of the Windows 7 operating system, and because of the different settings on the same version, our customers see different messages when they install our USB scanners. Since we cannot exhaust all the possibilities, our original installation manual may not work for all situations. Recently, a customer reported the “driver cannot be found” message and he found a way to install the driver using the same files that we provided. Please follow these steps to install the driver if you meet the same problem.

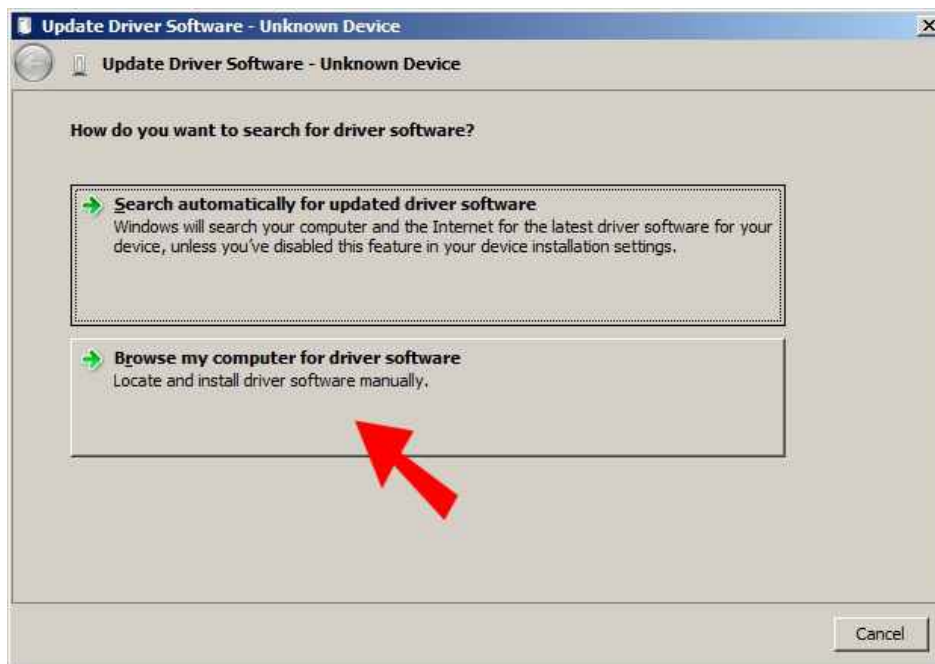


Figure 1. When this screen comes out, click “Browse my computer for driver software” pointed by the red arrow.



Figure 2. When this screen comes out, click “Let me pick from a list of device drivers on my computer” pointed by the red arrow. This is different than our usual method, which asks the user to click the “Browse” button to search for driver and the “driver cannot be found” message comes out.



Figure 3. When this screen comes out, click “Universal Serial Bus Controller” pointed by the red arrow and then click “Next”.



Figure 4. When this screen comes out, click “Have Disk” pointed by the red arrow. After following the procedures described in Figure 5, click “Next”.

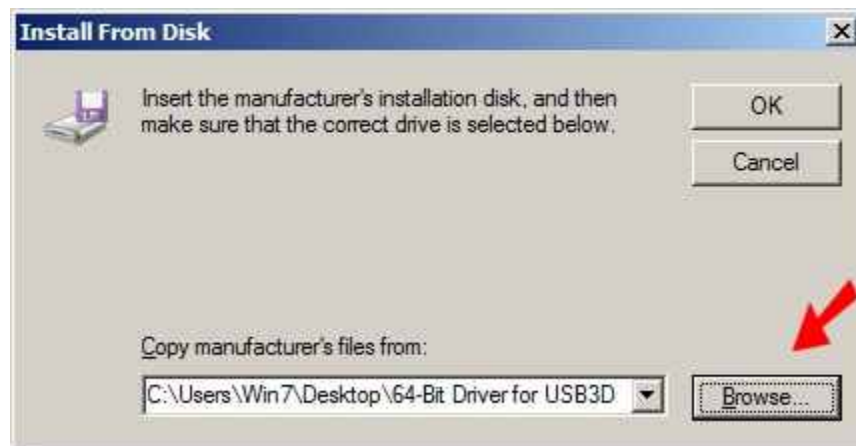


Figure 5. When this screen comes out, click “Browse” pointed by the red arrow. At this time, you must know where the driver files are located. 32-Bit Windows 7 and 64-Bit Windows 7 use different driver files and we provide them. You need to put the driver files in a folder in your PC. For example, if you put driver files in C:\TEMP folder, you browse into C:\TEMP for the above.

Name	Date modified	Type	Size
ezusb.sys	6/25/2010 8:35 AM	SYS File	13 KB
Sharp Shape Foot Scanner x64 Certificate	6/25/2010 8:33 AM	Security Certificate	1 KB
ShShx64	6/25/2010 9:24 AM	Setup Information	3 KB

Figure 6. If you are using 64-Bit Windows, make sure that the above driver files present. If you are using 32-Bit Windows, you can browse into C:\ScanFeet folder, where the 32-Bit driver is located (they are ezusb.sys and ShSh.inf).

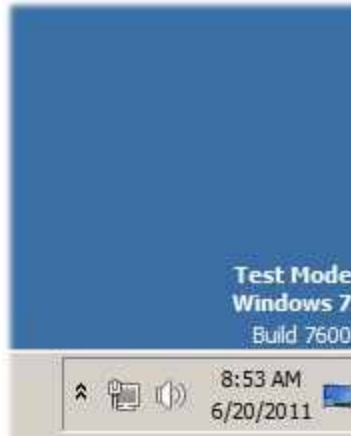


Figure 7. If you are using 64-Bit Windows, you need to run Test Mode, which is described in the normal 64-Bit driver installation manual. If you are using 32-Bit Windows, ignore this step.

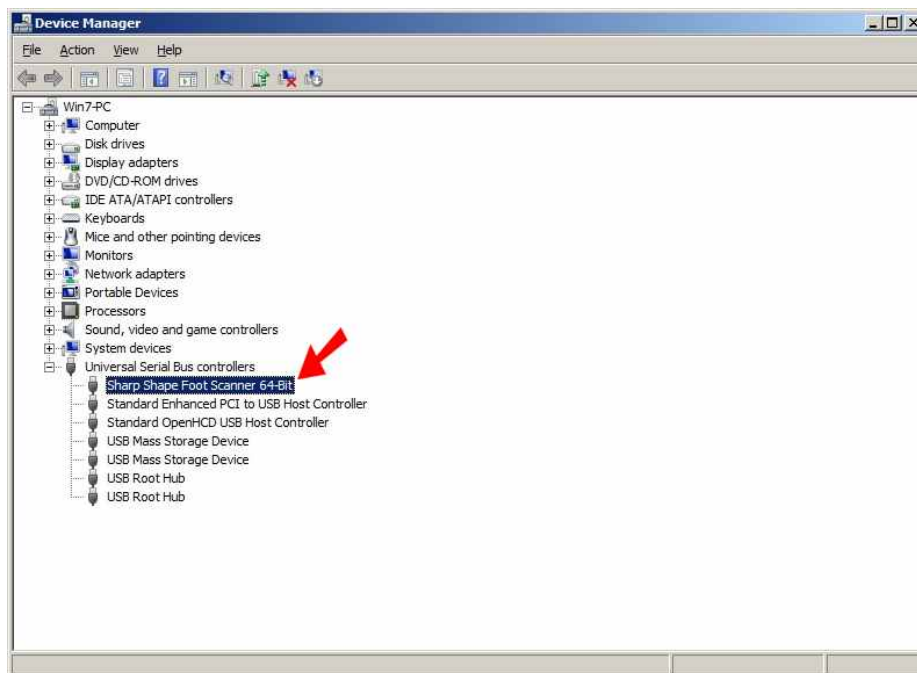


Figure 8. If successful, you should see the above item in Device Manager.

At the moment, we cannot answer why our usual installation procedures do not work on some computers. However, the way described in the above works so far. Please try it and let us know your experience.

If you have any questions, please contact us at [sharpshape@comcast.net](mailto:sharpshape@comcast.net). -- End of File --